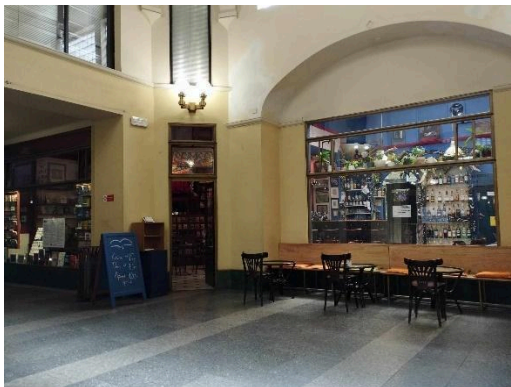


WELCOME TO OUR LIST OF MÍSTNÍ MÍSTNÍM CAFE REVIEWS

Řehoř Samsa café bar & knihkupectví, Vodičkova 30 Prague 1 (Václavské náměstí)
In the middle of Lucerna, (opposite Dr Figarova, OG Medical Centre) by Václavské náměstí
<https://www.facebook.com/RehorSamsacafebar> Monday–Friday 10:00-21:00

If the name Řehoř Samsa rings a bell it is because it is Gregor Samsa, the travelling salesman who transforms into an insect in Franz Kafka's book, Metamorphosis. The café is found within the passages of Lucerna and where, once upon a time, the likes of Havel and the literati could be found amongst books, coffee and a well-stocked bar. This atmosphere remains as you can still drink your coffee surrounded by books, information, art and the very well-stocked bar. It is traditional, calm, friendly and relaxed and where you can leisurely read books, chat and discuss with friends without feeling rushed or any pressure to leave. It is also a venue for exhibitions, lectures and music events. There are tables inside and a few outside in the Lucerna passage. There are hot drinks, copious options of cold drinks and a daily food menu. There are also stacks of books to peruse and a little puppet theatre on the wall. It is too good a café just to walk past so when you have built up a thirst in Václavské náměstí, you know where to quench it. Buy some Místní místním vouchers when you pay your bill and people without homes and in need can benefit from a hot drink.

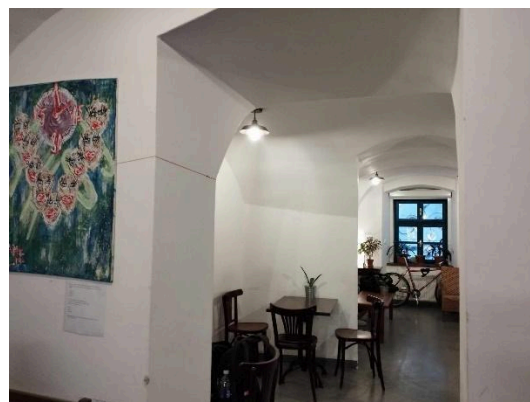
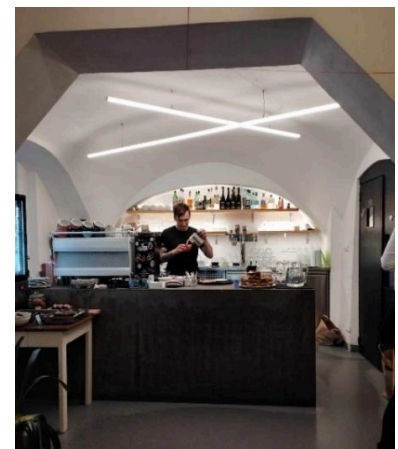
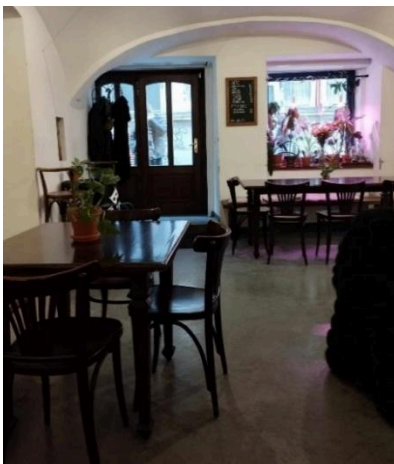


Coffee & Riot, Opatovická 159/17, 110 00, Prague 1 (Nové Město)

2 minutes from Národní Třída

<https://www.facebook.com/coffeeandriot/> Mon-Sun 09:00-20:00 Fri + Sat closes at midnight

Step into Coffee & Riot and you are suddenly away from the hustle and bustle of the metropolis. It's central, easy to find and gives you a moment of calmness before stepping back out into the world. Your senses will all be touched without you barely realising it - good, uncomplicated music quietly plays; delicious odours of homemade food and coffee gently waft your way, and they taste good too; the decor is visually uncluttered and calm and the subtlety of it all wins you over leaving you feeling content and satisfied. The menu offers you a good variety of drinks (hot, cold, alcoholic, non-alcoholic and cocktails) and food (breakfast, brunch and desserts). The staff are happy and attentive and create the 'friendly, small coffee house' which is a common theme in reviews. And even better, it's another dog very friendly Kavárna. We will be back for brunch. Don't forget to buy Místní místním vouchers whilst you are there!

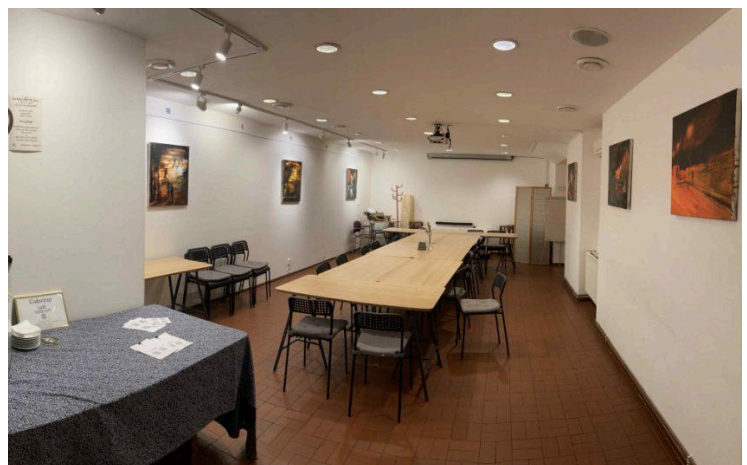


Café Therapy Školská 30, Prague 1

Between Můstek and Národní třída; Vodičkova tram stop 1 minute away.

<https://cafe-therapy.cz/> Monday-Friday 12:00 -22:00, Saturday + Sunday 16:00 – 22:00

There is a strong story behind Café Therapy. It was established in 2005 as the first social enterprise in the Czech Republic to help people with a troubled past to return to normal life. Due to their training and employment program, they have a 90% success rate. Located in the city centre, Café Therapy is a friendly multifunctional space that can be used for various activities and meetings. The meeting room can be booked for 250Kc/hour. The tables in the café are spaciouly arranged and provide a perfect meeting place for small or large numbers from midday until 10pm weekdays, and it is pet-friendly. It is also used for art exhibitions. The menu is both sweet and savoury and for all appetites whether you are hungry for a tasty guláš, duck, tartare, prunes wrapped in bacon or a delicious bowl of soup. The drinks menu also provides a good choice of alcoholic and non-alcoholic drinks, lots of coffee and even Eggnog. A warm, friendly ambiance adds to the enjoyment of Café Therapy. You can buy Místní místním vouchers there to be left on the counter to provide coffee and snacks for people without homes and in need or by bank transfer to the IWAP Charity Account, 4561765001 / 5500.



ROESEL Mostecká 45/20, 118 00 Praha 1 (Malá Strana)

Between Malostranské náměstí and Karlův most

<https://www.facebook.com/roesel.beer.food/> Open daily 11:00 – 22:00, Sundays 12:00 – 19:30

You could easily miss the ancient passage leading to Roesel. That would be a big mistake! Amongst the throng of flocking tourists in Mostecká is a gap in the shops leading to a quaint, peaceful courtyard (perfect shade and coolness on a hot summer's day) and then the arched ceilinged, calm, cosy café itself (perfect on any day). The history of the building starts in the 14th century but more recently, in 1848, Antonin Roesel came, saw and stayed. He married here, smoked his pipe and baked in the bakery. His great-grandson, Stanislav, the current owner of the house, was born here, played the violin and slid down the handrail. Today he enjoys having a beer in the café his own

grandson opened in 2017. You too can find as much enjoyment here as the Roesels, whether you pop in for a draft or craft beer, wine, coffee, tea, cakes, lunch and much more. The daily menus are excellent too. They are also very community minded – providing a drop off/pick up point for farmers and locals who can pick up their boxes of locally produced organic veg, kpzinfo.cz. They organise and take part in the annual September Zažít město jinak. <https://zazitmestojinak.cz/>. And they welcome people without homes to use their services.



Knihkupectvi ArtMap, Vojtěšská 196/18, 110 00 Prague 1 (Nové Město)
5 minute walk from metro Národní třída; very near to Národní divadlo tram stop
<https://knihy.artmap.cz/en/> Mon-Fri 11:00 -19:00, Sat 12:00-18:00

Knihkupectvi ArtMap, as the name suggests, is a bookshop about art. In fact books, comics, magazines, posters, prints, calendars, stickers, cards, notebooks, sketchbooks and anything with an art theme. It is a small, friendly, uncomplicated shop and not overwhelming with stacks of books. Whether you pop in briefly for a quick purchase or want to spend time browsing, you will be easily distracted and led to all sorts of discoveries.

As well as being a bookstore and an online bookstore, from time to time they organize events such as authors' sessions, presentations of publishers, workshops, discussions and lectures. The main aim of the Artmap company (founded in 2007) is to support and promote modern art in the Czech Republic.

And how do they support Místní místním? They provide tap water, a place to charge mobiles, free WiFi, a kettle, a microwave and a printer for people without homes and in need. All valuable services in the city centre. We can't buy vouchers here but can support them by buying something from the shop.



Restart Shop, Biskupská 1, Prague 1 (Florenc)

1 minute walk from Bílá labuť (tram and bus) or about a 5 minute walk from Florenc (metro, tram and bus)

Komunardů 14, Prague 7 (Holešovice) Beside tram stop Dělnická

<https://www.restartshop.cz/> open Monday – Friday 10:00 to 17:30

What do you do with your no longer needed clothes? Here's the solution! Take them to the Restart Shop along with your no longer used handbags, hats, scarves, shoes, belts, jewellery, household goods, toys, puzzles, stationary, pictures, books (in all languages), instruments and more where they will be sold. Everything except children's clothes and the kitchen sink. The shop is a treasure trove with a lot of everything in a small space and definitely worth browsing through whilst you are there. You will be surprised! Whilst I was there a friendly musician discovered a harmonica and gave us a happy rendition of some tunes before purchasing it, a very satisfied customer.

Apart from recycling and restarting donated items, the shop is part of a project which helps restart lives through training programmes, encouraging, helping and giving courage to people who face severe difficulties. Your donations and purchases will make a difference. Don't forget to buy some vouchers whilst there which people without homes and in need can then make use of and exchange for a warm winter coat or other essentials.

Šatník, Hall 19, Holešovická tržnice <https://www.satnikpraha.cz/> for donating children's clothes too.



Restaurace Střecha, Křemencova 186/7, 110 00 Prague 1 (Nové Město)

Between metro stations Národní třída and Karlovo náměstí; tram stops very nearby
<https://www.restauracestřecha.cz/en/> Monday-Saturday 11:00 – 24:00

Střecha (The Roof) is a vegan restaurant & café and a social enterprise, offering decent employment to people without homes or after serving a prison sentence. Almost every review on Tripadvisor refers to the staff – friendly, helpful, efficient, kind, great service, patient, nice, quick service, and so it goes on. See for yourself and you will definitely agree. The food is 100% vegan, delicious and even includes vegan duck, schnitzel, goulash, ribs and burgers as well as snacks, salads, a daily lunch menu and cakes (you must leave room for them!). Something for everyone at any time of the day. Střecha has also made brilliant use of the space, and there is lots of it. Tables and chairs can be instantly moved to create the configuration each customer requires – whether it is a table for 2 for coffee, a comfy chair in a corner from where you can work, a lunch party, a meeting in a quiet room, a beer/prosecco/cocktail in the evening or a training day. Whatever your needs, they can all be catered for. Apart from the main restaurant area, there is a private room at the back which is quiet and has equipment which can be hired. Vouchers are available to purchase to prepay for drinks and meals for people without homes and in need.



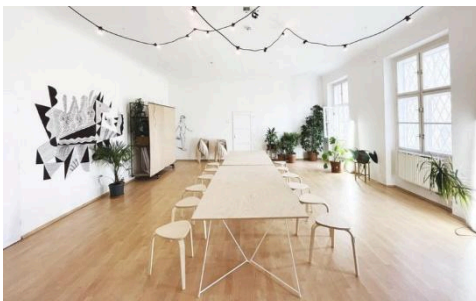
Skautský institut v Rybárně, U Sovových mlýnů 134/1, 118 00 Prague 1 (Kampa)

Situated on Kampa beside Museum Kampa, less than a 5 minute walk from Újezd tram stop

<https://www.skautskyinstitut.cz/skautsky-institut-v-rybarne>

Mon-Sat 10:00 - 22:00, Sun 10:00 – 20:00

Skautský institut v Rybárně is many things. It is a friendly, cool café on Kampa island where every weekday a daily vegetarian or vegan menu is prepared consisting of soup and a main course. The menu also includes a variety of desserts and other hot and cold treats. Eat and drink inside in the winter and outside in the warmth by the Vltava with views of Charles Bridge. It provides creative workshops. A ceramic workshop is complete with a kiln, clay and glazes. There are tools and equipment for working with textiles, glass, wood and metal. You can also develop analog films, rehearse with a band, practice DJing and record a podcast. Booking details are on their website. A hall on the first floor provides a variable space with a capacity of approximately 30 people. It can be arranged as a lecture room or a space for your workshop. Yoga classes take place regularly. Hire it for a party. A data projector, sound technology, Wi-Fi connection, flipcharts and markers are all available. Again, booking details are on their website. Exhibitions and other events regularly happen. Keep an eye on their Facebook page, as you can see there is a lot happening! Vouchers cannot be bought at the moment, this may change. But do support them, it really is a great place!



Dobrá trafika, Korunní 1174/42, 120 00 Prague 2 (Vinohrady)

A quick walk from metro stations: Jiřího z Poděbrad or Náměstí Míru and many tram/bus stops nearby

<http://dobratrafika.cz/> Mon-Sat 7:30-23:00, Sun 9:00-23:00

Note to self, next time I go to Dobrá trafika, I will definitely look at the menu first before going on autopilot and ordering just a cappuccino and no cake. The choice of teas and coffees is vast and interesting, as well as there being a great selection of other hot and cold drinks and cakes. I only learnt about salep (a hot, milky drink originating from the Ottomans which used to be flavoured with a powder made from orchid tubers) when paying the bill (and buying some vouchers at the same time) whilst watching some being prepared for a knowing customer, who was also wise enough to order cake too. Next time we will be smarter! Dobrá trafika is wonderfully rustic and has a lot going on. When you enter, you are in a tobacconist's where, apart from tobacco, you can purchase books, magazines, cards, postcards, notebooks and a range of useful bits and pieces. Hidden behind the shop you can find the main café which was calm and peaceful (and some great French café music playing) when we were there but you can also imagine lively discussions and convivial gatherings taking place. A further room at the back opens on to the garden area. The wall space provides a gallery for all sorts of art – new artists included. It changes regularly and can be purchased.



Kavárna Pražírna, Lublaňská 676/50, Praha 2 (Vinohrady)
behind Muzeum, very near IP Pavlova
<https://www.kavarnaprazirna.cz/> Monday-Friday 08:00 – 21:00

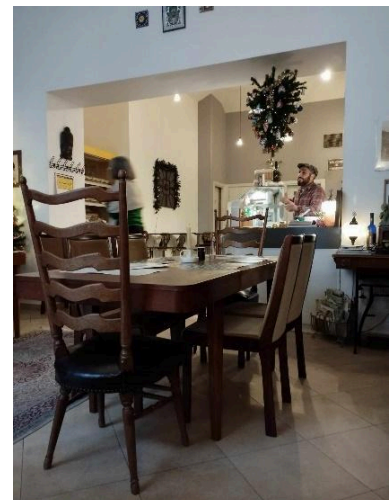
You will sense the warmth and comfort of Pražírna even before you have set foot in it. The aroma of delicious, hot coffee will greet you at the door and certainly entice you in. You will discover a gem - a warm, welcoming, cosy café. Try some beet ginger cake or a brownie to accompany your coffee or some homemade bread and almonds with a glass of wine. Lovely staff and a friendly, happy atmosphere both add to the experience. It is a perfect venue to meet friends at any time or to sit and catch up with emails and work. Pražírna means roaster in English, a very apt name. Don't forget to buy some vouchers when you pay your bill so as to provide coffee and snacks for people without homes and in need.



Bistro Habibi, Vratislavova 21/1, 128 00 Praha 2 (Vyšehrad)

a short distance from tram stops Výton or Albertov, or a 12 minute walk from Náplavka
<https://www.facebook.com/bistrohabibi/> open Tuesday – Sunday 12:00 – 21.30

Eating at Habibi's is an experience, a journey to the Middle East where you will discover true tastes and colours of an incredible part of the world. Habibi is from Jordan, his family (photos of them on the walls) pre-date Jordan and if you have time and curiosity he will share some of his fascinating story and knowledge with you. It is told with empathy, understanding and relevance. The mementos on the walls and shelves enrich the extraordinary tapestry of his life. And then, of course, there is food and drink which is why you have come in the first place! The menu is not large but typical Jordanian fare and delicious. It is freshly prepared and cooked there and then. Whilst we waited we drank Damascus tea (not to be missed) which also accompanied our vegan moussaka. We had no room for the baklava or other sweet offerings but at least you can buy some to take away. Our lunch was a 2 hour delight and a revelation. Barhaba! Habibi's kindness and generosity ensures everyone is welcome, "all species" as he says with a smile. You can buy Místní místním vouchers there to be left on the counter to provide a drink and a meal for people without homes or in need, or by bank transfer to the IWAP Charity Account, 4561765001 / 5500.



KC Vozovna, Hartigova 2687/164, 130 00, Prague 3 (Žižkov)

A very short walk from either Strážní or Vozovna Žižkov tram stops
<https://kcvozovna.cz/> Mon-Fri 11:00-19:00, Sat+Sun 14:00-18:00

One of the many pleasures about doing the reviews of the Místní místním kavárny is the joy of exploring new places and the discovery of something really good. Even though KC Vozovna is not difficult to get to, I had not been to that area previously. I'm sure there is a lot more to discover there too. The café is part of a thriving community centre, the Žižkov cultural center, which is an intergenerational center that organizes cultural, social and educational events. There is an active monthly programme as well as events throughout the year. The Municipal Library in Prague also has a branch here. There are theatre performances, workshops and art workshops for children, seniors and those in between. Or you can just stop by, sit in the foyer and read a book from the library. On top of everything else happening here, they do community neighbourhood breakfasts for everyone. The café (indoor and outdoor seating) not only has a good selection of homemade sweet and savoury snacks but also has a small choice of delightful gifts. I bought some Little Red Riding Hood story cards which I can't wait to use in my next English classes! Do go and have a look. It's a cool place, lots going on and they support Místní místním by providing essential services to people without homes and in need – water, toilet, WiFi and phone chargers.

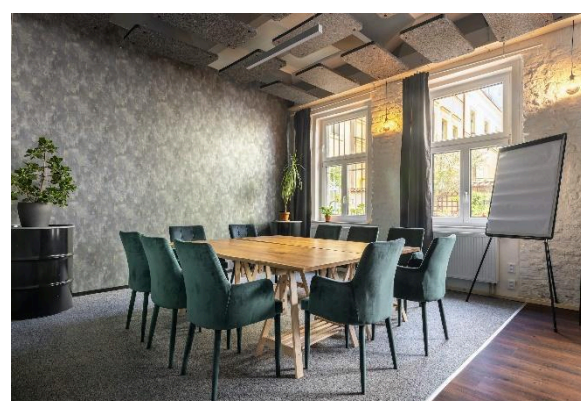


Pracovna & Laskafe, Vlkova 628/36, 130 00, Prague 3 (Žižkov)

Nearest metro - Jiřího z Poděbrad, nearest tram stops Lipanská, Vinohradská vodárna and a variety of bus stops. All of which are about a 5 – 10 minute walk away

<https://www.pracovna.cz/> Monday-Friday 08:30-22:00

When you look at the website of Pracovna and select 'Services' the list reads 'Podcasts, Café bar, Coworking, Photo production, Video production, Catering, A tailor-made podcast'. They cater and are fully equipped for all needs - you can hire a desk for a day, a month, a year; you can hire the meeting room, the pod studio, a great space for events (up to 100 people), the café or the whole lot! There are no limits and nothing is too much trouble. All the spaces and rooms are modern and chic with a definite charm too. The café/bar also provides something for all your needs – whether it is something to start the day at 8 o'clock; an 11 o'clock coffee and cake; a midday beer and sandwich; a late lunch; G & T (anytime as it is 6 o'clock somewhere in the world); a prosecco to celebrate or that tot of whisky at the end of the day. No food is wasted as what is left is put onto the Nesněženo app (an app for selling leftover food from restaurants). Pracovna & Laskafe translates as study & kindly which is only a hint of what is happening there. Although Místní místním vouchers are not available there yet, they will help with paperwork and printing for people without homes and in need as well as providing somewhere to charge their mobiles, water and bathroom facilities.



Kavárna Potrvá, Srbská 347/2, 160 00, Prague 6 (Dejvice)

A short walk from the metro/tram stop Hradčanská , other tram and bus stops nearby.

Located in the basement of the building.

<https://www.potrva.cz/cs/kavarna/> Monday-Sunday 15:00-22:00

There's lots going on in Potrvá. It is a café, a club and a bar. It is a space where anything can happen – concerts, lectures, film screenings, artwork, private functions. You can rent the space with a mixing desk, speakers, vocal and instrument microphones, theater lighting, projector and projection screen, piano, a sound engineer and more. It is inside and outside. They are innovative. As well as known bands and musicians, they promote debut bands. They test new drinks. They don't stand still! Whilst it can be a lively bar in the evening, it can still be a quiet café during the day where you can sip your latte and your soup of the day accompanied with open sandwiches, hummus and snacks. With the onset of summer, a beer in a garden is always most welcome too. It is also one of the longest standing cafés to have been with Místní místním. Vouchers are available to buy and leave there for people without homes and in need who can then get a drink or meal with them.

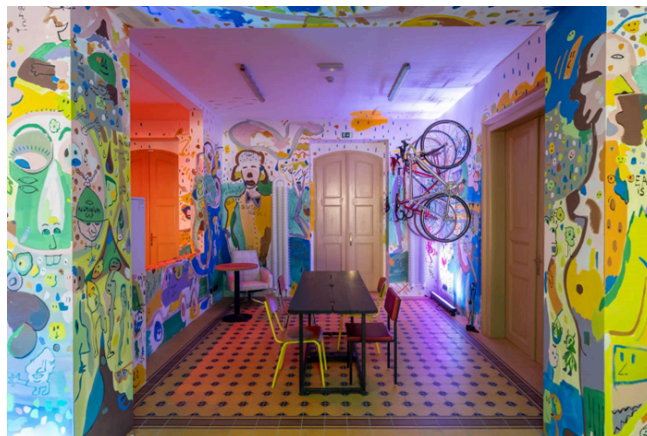


Stanice 6, Goetheho 4, Prague 6 (Bubeneč)

Either a 12 minute walk or bus 131 from Hradčanská. Ideal for walkers and cyclists – it's on the edge of Stromovka park

<https://stanice6.cz/> Mon-Fri 2-12 Sat/Sun 10-12

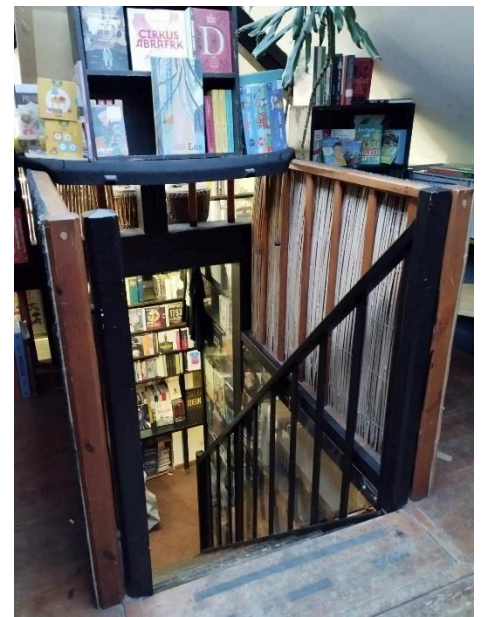
Both contemporary and historical, Stanice 6 is cool, quirky and fun. It's a community centre with a café inside and out, a bar, a gallery, a gym, a designer ping pong table, a multicultural centre which can host concerts, film screenings, debates, sports activities and other events of a diverse nature and you can even train watch! It was built in 1850, back in Emperor Franz Josef I day on the edge of what was then the Royal Game Reserve Stromovka. It is one of the oldest railway stations in Prague (along with Dejvice and Masaryk Railway Station). On August 28th 2014 the last train departed from the Bubeneč train station and exactly 10 years later Stanice 6 opened. " A place to sit, chat, play and contemplate". They support Místní místním so let's support them!



Knihkopec, Tusarova 1545/25A, 170 00, Prague 7 (Holešovice)
2 minute walk from Dělnická tram stop, in the middle of the park

https://www.facebook.com/Knihkopec/photos_by Monday-Friday 11:00-21:00 (summer)
15:00-21:00 (winter), Saturday and Sunday 15:00-21:00

Some things in life are just meant to go together, like sun & sea, toast & jam, books & tea (or coffee or beer). The perfect match of the latter can be found at Knihkopec, a café and bookshop just behind Holešovická tržnice. What used to be a public toilet in the little park has now become a snug of discovery. Knihkopec translates as 'a pile of books' and there are certainly lots (mainly Czech but also other languages such as English and German)! Surrounded by so many books is a wonderful distraction whilst having your cup of tea whether you take something off the shelf to browse or even just immerse yourself looking at titles. The books are all for sale as are drinks (excellent Pivovar Chříč) and a small selection of food all served by wonderful, happy staff. In the summer the café spreads into the park (where there is also a playground) with plenty of tables and chairs. In the winter, it's inside, cosy and charming. If you enjoy quirky and unique, you must certainly pay a visit. And don't forget to buy Místní místním vouchers whilst you are there!



Mlsná kavka, Sokolovská 327/29, Prague 8 (Karlín)

2 minutes from Florenc

www.mlsnakavka.cz/ open Monday-Thursday 10:30 – 17:00

If you like your coffee really hot and tasty, go to Mlsná kavka to have a welcoming drink in a warm, uplifting, bright café with some rather good background music and happy staff. Mlsná kavka is friendly and spacious where you can enjoy both vegetarian and non-vegetarian food along with a glass of beer, wine or non-alcoholic drinks to accompany breakfast, lunch or in fact any break in the day. There are comfy sofas and chairs conveniently arranged for both smaller and larger groups allowing for chatty, friendly gatherings; more serious meetings and interest/learning groups all to take place. There is also a cute children's corner with chairs, a table and a variety of toys and games. The café is part of the Green Doors organization, <https://www.greendoors.cz/cs/o-nas/>, giving people with mental illness an opportunity to work and a community. The training they provide often leads to further employment.



Kafe na dřevo, Pilská Park, Pilská 5/9, 198 00, Prague 14 (Hostavice)

(45 minutes from Můstek Trains to Praha-Dolní Počernice Buses to Hostavice or Lomnická

<https://kafenadrevo.cz/> Tues-Fri 12-19, Sat/Sun 10-19

Hostavice is worth a visit. It is Prague 14 which seems a very long way out, but only 45 minutes from Můstek. Kafe na dřevo, translates as coffee on wood, is a little like Ronseal, 'It does exactly what it says'. It is a modern wooden building where you can sit on the terrace (made from wood) surrounded by trees in the park. It's all very natural and charming. It is located in Pilská Park which it shares with a 19th century neo-renaissance style zámek (now a school) and some play areas and education areas for children.

<https://www.prahaneznamy.cz/hostavice/>

<https://spolekhostavicepraha14.cz/hostavice-historie/>

The menu is small but provides everything you need - a good variety of drinks (hot and cold) and snacks (soup, pizza, quiche and cakes). Once you are out in Hostavice there are other places to explore nearby, for example Rozhledna Doubravka, Chvalský zámek and Letecké muzeum Kbely, <https://www.explorio.cz/a/park-pilska>. You can certainly make a good day of it. Kafe na dřevo do sell Místní místním vouchers and although do not get many people without homes visiting, they are used and enjoyed by people in need and seniors. They are community minded and want people to enjoy the peace and nature surrounding them.

